



Ministry of Health Uganda

Weekly Epidemiological Bulletin

Summary Table

Indicator	Week 24 2015	Week 25 2015
% Districts	100	99
Ave % HU	68	70
% Timely reports	81	75
AFP	17(0)	3(0)
Rabies	356(1)	404(6)
Cholera	0	17(0)
Dysentery	1073(0)	1141(0)
Guinea Worm	6(0)	3(0)
Malaria	240294 (48)	263591 (72)
Measles	171(0)	151(0)
Meningitis	11(0)	18(2)
NNT	0	0
Plague	6(0)	0
Typhoid	2324(3)	2594(1)

Completeness of Reporting

One district (Pader) did not report in week 25. At national level, the average reporting rate was 70% with Northern Uganda having the highest reporting rate of 78%. The number of districts that achieved the national target of $\geq 80\%$ was 38 with 8 districts achieving 100% reporting. Seventy four districts had a reporting rate below 80% reporting (highlighted in pink).

Timeliness

There was a reduction in the proportion of health facilities that reported on time from 81% in week 24 to 75% in week 25. However, there has been overall improvement in timely reporting from week 18 (**Figure 1**). Fifty one districts had a reporting rate of $\geq 80\%$.

Epidemiological week 25 of 2015 [14th June – 20th June 2015]

Disease Outbreaks

Cholera: Seventeen cases have been reported, 6 cases from Busia and 11 cases from Kasese. The data from Busia may be an error and needs to be verified. The cases in Kasese district are from Katwe Town Council, treated at Katwe-Kabatoro Cholera Treatment Centre. Mozambique, Tanzania, Kenya, Malawi and South Sudan are also experiencing cholera outbreak with significantly higher numbers (**Table 2**).

Measles: There was a slight reduction in the number of cases reported from 171 in week 24 to 151 in week 25. There was no death attributed to Measles. Forty two districts reported at least one case with 3 districts reported 10 or more case i.e. Kampala (18), Masaka (12) and Wakiso (10).

Typhoid fever: The number of typhoid cases slightly increased from 2324 in week 24 to 2594 in week 25. The highest number of cases (374) was seen in Kampala. One death due to typhoid was reported.

Other priority diseases

AFP: Three cases of AFP were reported by 3 districts i.e. Bushenyi, Busia and Butambala (also reported one case in week 24). There is need to verify this data from these districts.

Rabies: There was a slight increase in the number of reported animal bites reduced from 356 in week 24 to 404 in week 25. Six deaths attributed to rabies were reported from Buikwe district. There is need to verify this data from Buikwe district. Eighty one districts reported one or more cases of animal bites. Twelve districts reported 10 or more cases of animal bites as a proxy of rabies.

Dysentery: The number of reported dysentery cases was 1141 with no death reported. A total of 34 districts reported ≥ 10 cases.

Meningitis: Eighteen cases of Meningitis and two deaths were reported from 6 districts. The number of cases in Gulu district increased from three in week 24 to six in week 25. Other districts that reported cases are: Kampala (6), Oyam (3), Arua (1), Kamwenge (1) and Rukungiri (1). The two deaths occurred in Kamwenge and Rukungiri districts. Data from DHIS-2 shows that there has been a gradual increase in number of cases since January 2015 (**Figure 2**).

Neonatal tetanus: No case of Neonatal tetanus was reported.

Malaria: The number of reported malaria cases in all regions of the country continues to increase (**Figure 3**). Data shows that the Northern region still bears the brunt of malaria burden. The malaria positivity rate has been increasing (**Figure 3**). An outbreak of malaria has been confirmed in 10 districts in Northern Uganda. A multi-sectoral team is currently out in the field to work with District Rapid Response Teams to control the outbreak. A comprehensive response plan has been made and it will be presented to the NTF meeting for approval.

Human Influenza:

Guinea worm: Three cases were reported Bundibugyo, Kaberamaido and Manafwa districts. This data needs verification from health facilities.

Maternal deaths: Sixteen maternal deaths were reported from 12 districts as shown in the table below. Bwera and Nyapea Hospital reported perinatal deaths.

Table 1: Maternal and perinatal deaths in different health facilities

Health Facility	Maternal Deaths	Perinatal Deaths
Nyapea HOSPITAL	2	2
Lira REGIONAL REF HOSPITAL	1	0
Bwera HOSPITAL	1	2
Bumunji HC II	1	0
Buwembe HC II	1	0
Entebbe HOSPITAL	1	0
St. Joseph Kitovu HOSPITAL	1	0
Kitagata HOSPITAL	3	0
Buteba HC III	1	0
Mbehenyi HC III	1	0
Kigambo HC III	1	0
Ibulanku Community Health Centre HC III	2	0

International health events:

Ebola in West Africa: One month and 20 days after Liberia was declared Ebola free according to the recommended World Health Organization (WHO) follow up period of 42 days from the last confirmed case. However, one case of Ebola has been confirmed.

Crimean Congo Haemorrhagic fever: This disease which is transmitted after an infected tick bite was confirmed in Rostov region of Russia. The number of people affected had reached 50 by 29th June 2015. So far one death has been recorded. Uganda previously had the outbreak in Northern Uganda and being a zoonosis, a meeting was held on Monday 29th June by human and animal health experts to discuss the successes in response.

Table 2: Cholera outbreaks in East and Central Africa

Current Cholera Outbreaks

Time period	Country	Area	Number of cases	Number of deaths	CFR
25 Dec 2014 - 11 May 2015	Mozambique	Cabo Delgado, Sofala, Zambezia, Tete, Niassa, Nampula	8,739	69	0.8%
2 Jan - 26 May 2015	Kenya	Nairobi, Migori, Homa Bay, Bomet, Mombasa, Nakuru, Muranga, Kirinyaga, Baringo, Kiambu and Embu	3,486	71	2.0%
2 Jan - 19 June 2015	United Republic of Tanzania	Nyarugusu camp + country wide	4,667	34	0.7%
11 Feb - 31 May 2015	Malawi	Nsanje, Chikwawa, Ntcheu, Mwanza, Phalombe, Blantyre, Dedza and Lilongwe	687	11	1.6%
1 March - 23 June 2015	Uganda	Kasese district	205	2	0.98%
18 May – 25 June 2015	South Sudan	Juba 3 IDP, Manga tain IDP, New site, Juba, and Kator	268	20	7.4%

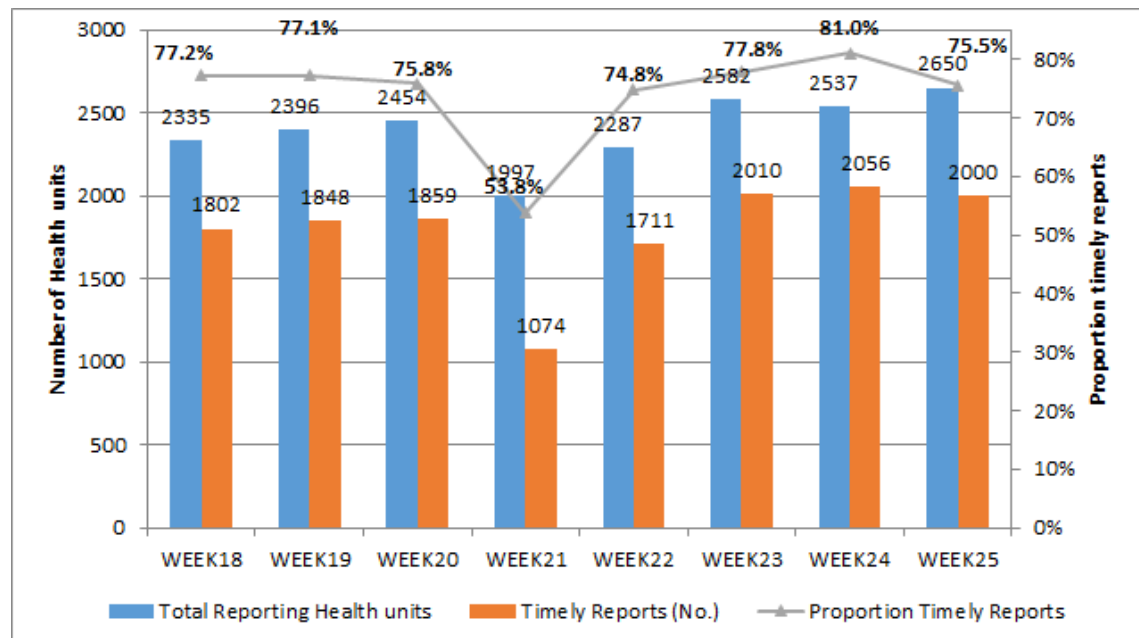


Figure 1: Proportion of health facilities with timely reporting

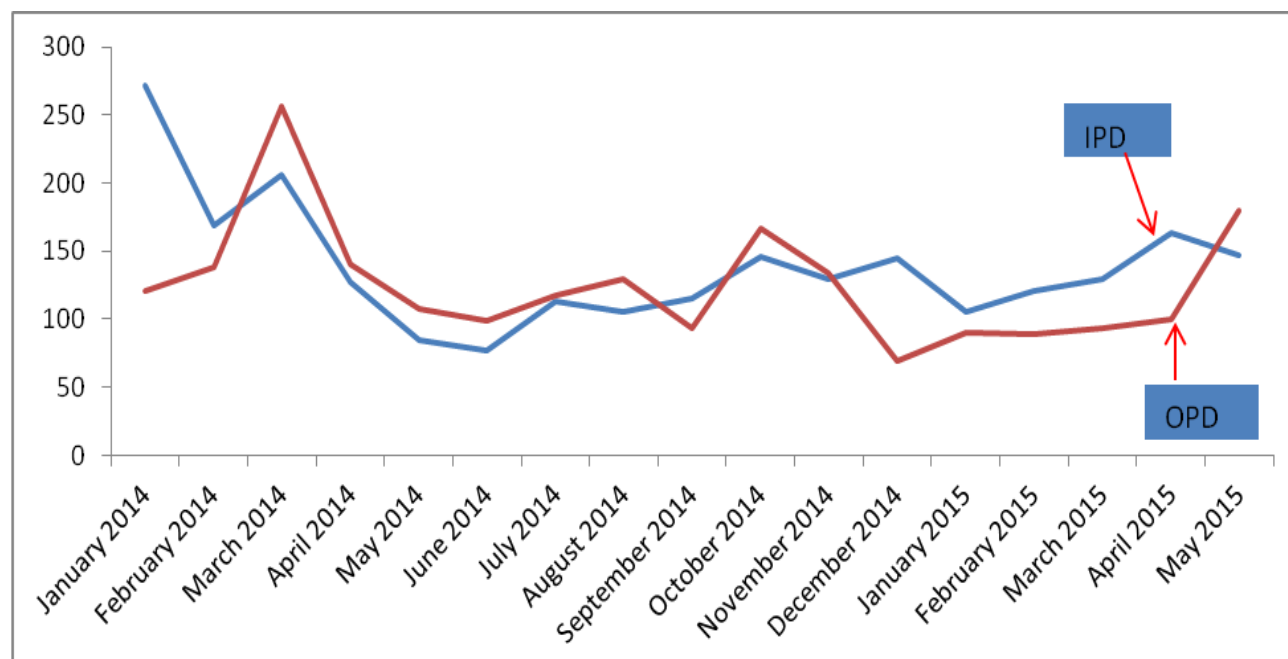


Figure 2: Meningitis trends from January 2014 to May 2015

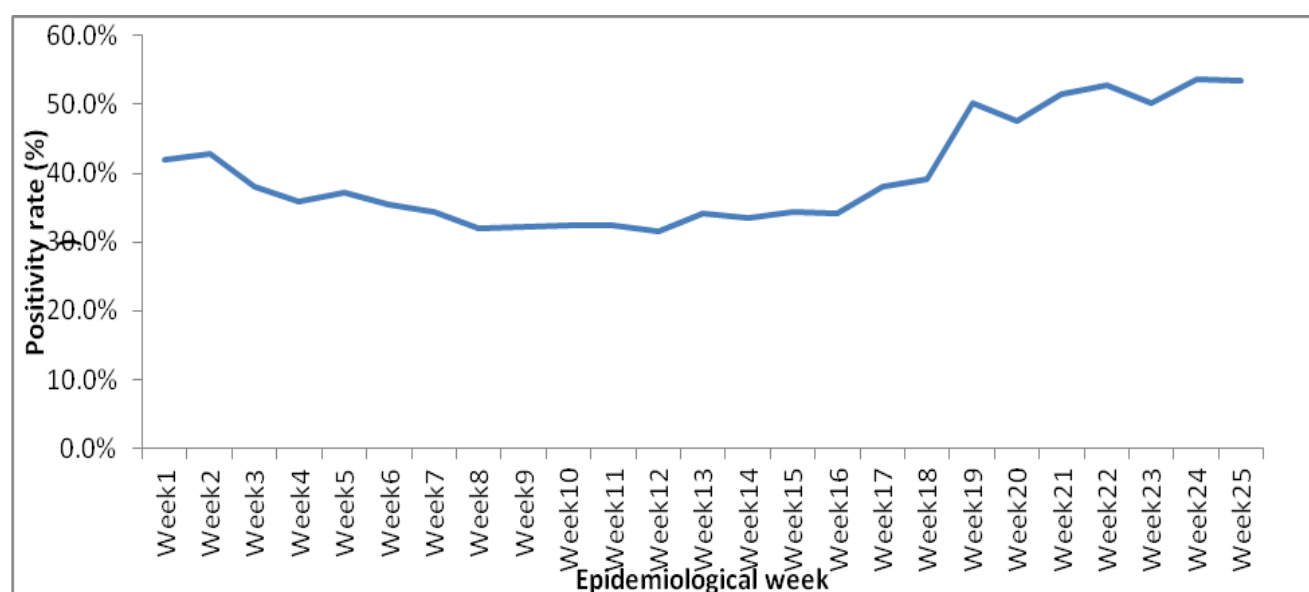


Figure 3: Malaria positivity rate by epidemiological week

Editorial: Dr. M. Musenero, Mr. M. Mugagga, Dr. J. Wamala, Dr. Issa Makumbi, Dr. R. Musoke, Dr. J. Sekajugo, Dr. F. Adatu, Dr. C. Okot, Mr. John Kissa, Dr. I. Nabukenya

Founders: Dr. J. Kamugisha (RIP), Dr. J. Wanyana, Dr. M. Lamunu, Dr. C. Mugero Dr. N Ndayimirigye Mr. L. Luswa (RIP), Dr. N. Bakyaata, Mr. M. Mugagga

For comments please contact: The Epidemiological Surveillance Division - MOH; P.O BOX 7272 Kampala, Tel: 0414-340874/0414-345108
Email: esd@health.go.ug or esduganda@yahoo.co.uk

Summary table for epidemiological reports received for week ending 20th June 2015

(Numbers in brackets indicate deaths)

District	% of H/U reporting	AFP	Animal bite (Suspected Rabies)	Cholera	Dysentery	Guinea Worm	Malaria	Measles	Meningitis	NNT	Plague	Typhoid Fever
Abim	90	0	1	0	33	0	1570	0	0	0	0	2
Adjumani	69	0	2	0	19	0	3428(2)	0	0	0	0	1
Agago	76	0	0	0	34	0	4899(1)	0	0	0	0	0
Alebtong	79	0	1	0	3	0	1688	0	0	0	0	1
Amolatar	77	0	0	0	6	0	1218	0	0	0	0	8
Amudat	100	0	0	0	11	0	568	0	0	0	0	6
Amuria	68	0	5	0	5	0	2952(1)	0	0	0	0	2
Amuru	61	0	0	0	17	0	3313	0	0	0	0	1
Apac	75	0	4	0	0	0	4620	0	0	0	0	3
Arua	96	0	19	0	59	0	10962(2)	2	1	0	0	87
Budaka	69	0	2	0	4	0	899	0	0	0	0	1
Bududa	93	0	1	0	3	0	1013	0	0	0	0	0
Bugiri	37	0	1	0	1	0	1738	0	0	0	0	85
Buhweju	33	0	0	0	1	0	130	0	0	0	0	0
Buikwe	90	0	10(6)	0	14	0	3378	8	0	0	0	78
Bukedea	27	0	0	0	0	0	220	0	0	0	0	3
Bukomansimbi	82	0	0	0	3	0	1326(1)	0	0	0	0	7
Bukwo	94	0	5	0	45	0	577	2	0	0	0	41
Bulambuli	80	0	1	0	0	0	1034	1	0	0	0	0
Buliisa	70	0	1	0	73	0	980	0	0	0	0	5
Bundibugyo	72	0	3	0	10	1	1869	0	0	0	0	19
Bushenyi	60	1	1	0	2	0	1067(1)	1	0	0	0	51
Busia	57	1	17	6	15	0	1745(3)	0	0	0	0	1
Butaleja	75	0	2	0	12	0	2439(1)	0	0	0	0	2
Butambala	91	1	3	0	8	0	1881(1)	5	0	0	0	40
Buvuma	73	0	1	0	9	0	566	2	0	0	0	5
Buyende	70	0	0	0	2	0	1247	0	0	0	0	0
Dokolo	100	0	2	0	2	0	2572	0	0	0	0	5
Gomba	61	0	1	0	6	0	1186	0	0	0	0	1
Gulu	97	0	9	0	39	0	9723(5)	0	6	0	0	57
Hoima	94	0	12	0	32	0	5549(3)	2	0	0	0	69
Ibanda	54	0	5	0	1	0	2255	0	0	0	0	1
Iganga	51	0	2	0	4	0	3760(2)	2	0	0	0	6
Isingiro	81	0	0	0	1	0	3892	0	0	0	0	49
Jinja	38	0	1	0	8	0	2755(4)	0	0	0	0	12
Kaabong	74	0	11	0	34	0	2704(1)	0	0	0	0	4
Kabale	91	0	5	0	0	0	441(3)	0	0	0	0	0
Kabarole	87	0	5	0	10	0	3825(3)	6	0	0	0	27
Kaberamaido	48	0	2	0	5	1	2339	1	0	0	0	7
Kalangala	59	0	0	0	8	0	285	0	0	0	0	1
Kaliro	50	0	0	0	0	0	1331	0	0	0	0	15
Kalungu	55	0	0	0	1	0	1032	0	0	0	0	26
Kampala	67	0	21	0	60	0	4484(1)	18	6	0	0	374
Kamuli	58	0	6	0	3	0	3857	1	0	0	0	7
Kamwenge	92	0	2	0	6	0	3835(2)	7	1	0	0	3
Kanungu	52	0	0	0	2	0	914	4	0	0	0	48

District	% of H/U reporting	AFP	Animal bite (Suspected Rabies)	Cholera	Dysentery	Guinea Worm	Malaria	Measles	Meningitis	NNT	Plague	Typhoid Fever
Kapchorwa	88	0	1	0	30	0	878	0	0	0	0	4
Kasese	68	0	2	11	3	0	4799(4)	1	0	0	0	31(1)
Katakwi	32	0	0	0	4	0	1256	0	0	0	0	0
Kayunga	83	0	2	0	12	0	3285(1)	2	0	0	0	1
Kibaale	73	0	2	0	10	0	3138(1)	6	0	0	0	133
Kiboga	71	0	1	0	3	0	974	4	0	0	0	22
Kibuku	47	0	0	0	0	0	428	0	0	0	0	2
Kiruhura	82	0	5	0	2	0	2536	0	0	0	0	1
Kiryandongo	76	0	4	0	5	0	3225	1	0	0	0	17
Kisoro	97	0	1	0	0	0	261	3	0	0	0	1
Kitgum	62	0	9	0	12	0	5408(3)	0	0	0	0	29
Koboko	100	0	7	0	3	0	3111	2	0	0	0	5
Kole	92	0	4	0	2	0	2985	0	0	0	0	1
Kotido	35	0	0	0	57	0	1163	0	0	0	0	64
Kumi	68	0	0	0	2	0	2940(1)	1	0	0	0	21
Kween	94	0	2	0	8	0	781	0	0	0	0	3
Kyankwanzi	71	0	1	0	1	0	1410	0	0	0	0	10
Kyegegwa	100	0	2	0	1	0	3241	5	0	0	0	5
Kyenjojo	77	0	4	0	4	0	2732	2	0	0	0	14
Lamwo	80	0	1	0	2	0	3303	0	0	0	0	0
Lira	56	0	2	0	6	0	2628(1)	0	0	0	0	21
Luuka	64	0	0	0	1	0	1362	0	0	0	0	0
Luwero	73	0	13	0	8	0	3101(1)	5	0	0	0	101
Lwengo	44	0	0	0	0	0	956	1	0	0	0	22
Lyantonde	33	0	1	0	0	0	536	0	0	0	0	91
Manafwa	87	0	1	0	8	1	1591(1)	0	0	0	0	6
Maracha	100	0	2	0	13	0	3510	0	0	0	0	41
Masaka	100	0	0	0	9	0	2754	12	0	0	0	11
Masindi	74	0	11	0	9	0	3020	0	0	0	0	15
Mayuge	41	0	0	0	9	0	1311	0	0	0	0	0
Mbale	71	0	4	0	7	0	2451	0	0	0	0	7
Mbarara	88	0	11	0	6	0	1897(1)	3	0	0	0	81
Mitooma	64	0	0	0	0	0	1261	0	0	0	0	4
Mityana	62	0	5	0	3	0	3406(2)	3	0	0	0	8
Moroto	71	0	7	0	12	0	1408(1)	0	0	0	0	7
Moyo	100	0	5	0	26	0	4170	0	0	0	0	45
Mpigi	90	0	0	0	2	0	1880	1	0	0	0	36
Mubende	25	0	6	0	3	0	2264(2)	2	0	0	0	53
Mukono	79	0	2	0	14	0	2974	2	0	0	0	16
Nakapiripirit	65	0	2	0	21	0	1692	0	0	0	0	3
Nakaseke	78	0	4	0	9	0	1805	6	0	0	0	35
Nakasongola	46	0	0	0	3	0	1252	1	0	0	0	34
Namayingo	10	0	0	0	7	0	400	0	0	0	0	0
Namutumba	61	0	0	0	1	0	2114	1	0	0	0	2
Napak	83	0	3	0	14	0	1707(3)	0	0	0	0	2
Nebbi	86	0	13	0	55	0	7104(3)	1	0	0	0	43
Ngora	50	0	0	0	3	0	1169	0	0	0	0	1

District	% of H/U reporting	AFP	Animal bite (Suspected Rabies)	Cholera	Dysentery	Guinea Worm	Malaria	Measles	Meningitis	NNT	Plague	Typhoid Fever
Ntoroko	56	0	2	0	2	0	245	0	0	0	0	1
Ntungamo	42	0	13	0	0	0	574(1)	0	0	0	0	11
Nwoya	95	0	1	0	1	0	2234(2)	0	0	0	0	0
Otuke	92	0	0	0	2	0	1745(1)	0	0	0	0	0
Oyam	64	0	7	0	3	0	2970(1)	0	3	0	0	5
Pader	NR	NR	NR	NR	NR	NR	NR	NR	NR	NR	NR	NR
Pallisa	57	0	3	0	8	0	1889	0	0	0	0	
Rakai	34	0	1	0	15	0	3548	2	0	0	0	
Rubirizi	88	0	0	0	1	0	1335	0	0	0	0	
Rukungiri	59	0	42	0	1	0	1647	5	1	0	0	
Sembabule	63	0	1	0	5	0	2129	0	0	0	0	
Serere	55	0	0	0	8	0	1673	0	0	0	0	
Sheema	74	0	2	0	0	0	1339	0	0	0	0	
Sironko	69	0	1	0	3	0	1954	0	0	0	0	
Soroti	68	0	9	0	23	0	3901(4)	4	0	0	0	
Tororo	56	0	9	0	6	0	4236	0	0	0	0	
Wakiso	54	0	2	0	15	0	4305	10	0	0	0	
Yumbe	88	0	3	0	11	0	4270	0	0	0	0	
Zombo	100	0	4	0	16	0	1954(1)	3	0	0	0	
National	70	0	404 (6)	17 (0)	1141	3 (0)	263591 (72)	151 (0)	18 (2)	0	0	2594 (1)

HU= Health Units, AFP=Acute Flaccid Paralysis, NNT=Neonatal Tetanus, NR =Not Reported
Compiled by the Epidemiological Surveillance Division, Ministry of Health